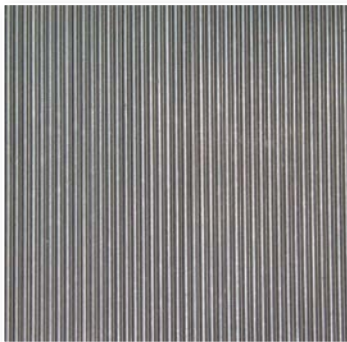


FINE-RIB

CODE	SIZE MM
4108-1207	10000 x 1200 x 3



Lightweight slip resistant hard wearing and durable rubber matting, excellent for use in aisles, corridors and workshops. Ideal for protection on workbenches, toolboxes, trays. Very good floor to foot cold insulation properties.

BROAD-RIB

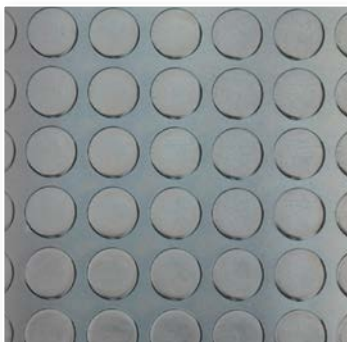
CODE	SIZE MM
4107-1247	10000 x 1200 x 4
4107-1207	10000 x 1200 x 6



Heavy duty slip resistant directional ribbed surface rubber matting to withstand tough everyday use, often used for lining vehicle bodies. Very good floor to foot cold insulation properties.

PENNY-WASHER

CODE	SIZE MM
4109-1228	10000 x 1200 x 3



An attractive patterned hard wearing rubber matting providing attractive slip resistance and often used in corridors and entrances.

FLATPLATE INSERTION RUBBER

CODE	SIZE MM
4121-1207	10000 x 1400 x 3
4120-1407	10000 x 1400 x 5



A smooth finish rubber matting with cotton insertion to strengthen and protect from tearing, often used for partitions, walls work benches and table tops.

E: sales@wwmuk.uk

W: www.wwmuk.uk

Thatchems Farm, Williamscot, Banbury, OX17 1AR

We also offer: Custom Shapes and Sizes
On-site analysis and reports
Measuring and fitting service
Wide range of standard sizes available

UK AND
IRELAND COVERAGE

Tel: **0845 658 8340** Fax: **0845 017 1352**